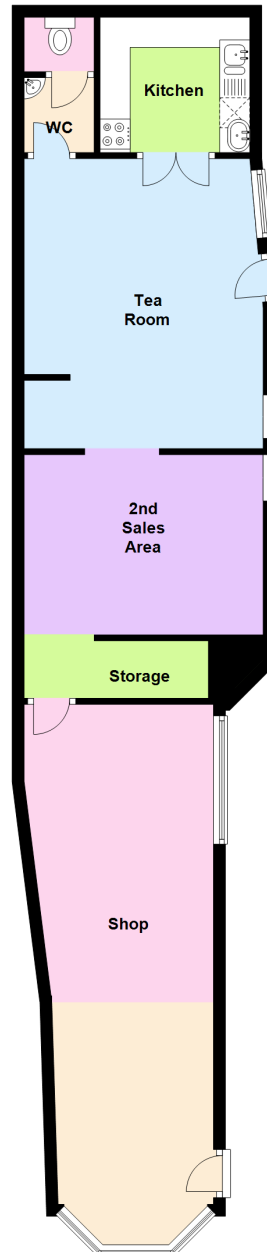


Ground Floor

Approx. 68.7 sq. metres (739.7 sq. feet)

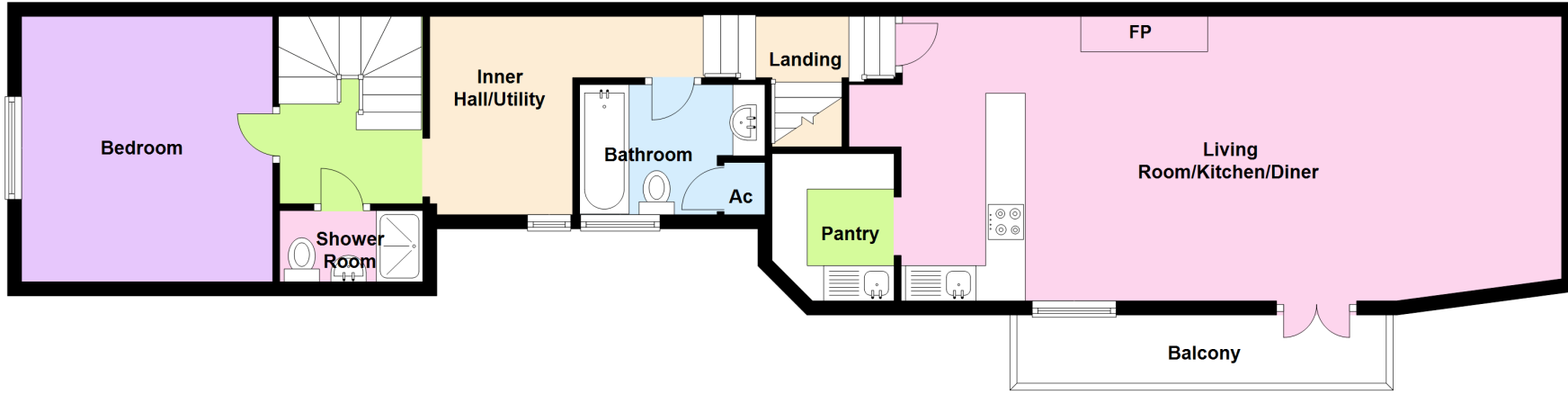


Prepared by Avonvale Solutions. Please note that all measurements and the floor plan are quoted for general guidance and whilst every attempt has been made to ensure accuracy, they must not be relied upon and do not form part of a contract.
Plan produced using PlanUp.

Go Down Shop, 51 High Street, Pershore

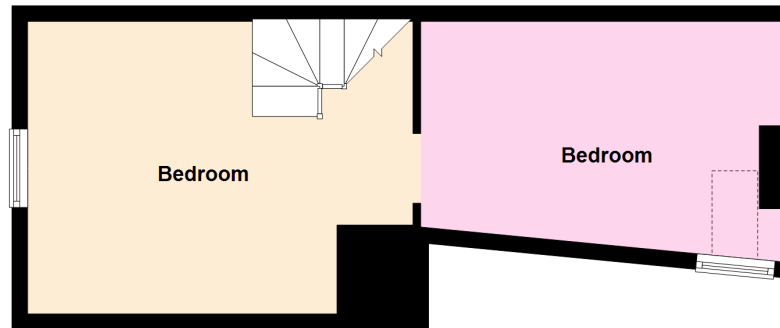
First Floor

Approx. 80.6 sq. metres (867.9 sq. feet)



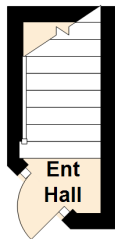
Second Floor

Approx. 31.7 sq. metres (341.1 sq. feet)



Ground Floor

Approx. 2.2 sq. metres (23.5 sq. feet)



Prepared by Avonvale Solutions. Please note that all measurements and the floor plan are quoted for general guidance and whilst every attempt has been made to ensure accuracy, they must not be relied upon and do not form part of a contract.

Plan produced using PlanUp.

Flat (Godown), Pershore